

GETIN NOBLE BANK GROUP'S FINANCIAL RESULTS

for the first three quarters 2010

Presentation for investors and analyst
of non-audited financial results

Warsaw, 10 November 2010

**30.09.2010 / 31.12.2009**

30,9 PLN bn	+20,7%	Loans balance
34,3 PLN bn	+21,6%	Deposits balance
3,2 PLN bn	+9,3%	Equity (attributable to equity holders of the parent company)
39,0 PLN bn	+17,8%	Balance sheet total

Q1-Q3'2010 / Q1-Q3'2009

768,1 PLN m	+36,2%	Net interest income
707,5 PLN m	+44,5%	Net fee and commission income
324,2 PLN m	+18,4%	Operating profit
530,8 PLN m	+13,2%	Overhead costs
835,4 PLN m	+51,9%	Result on provision for NIL and other accounts receivable
342,4 PLN m	+39,6%	Net profit (attributable to equity holders of the parent company)
31,4%	-4,9 p.p.	C / I
10,3%		CAR
17,2%	+17,2 p.p.	ROE

**30.09.2010 / 31.12.2009**

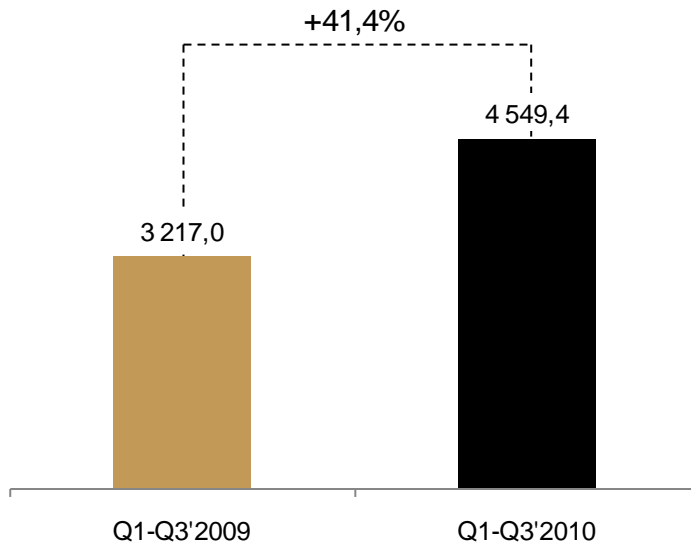
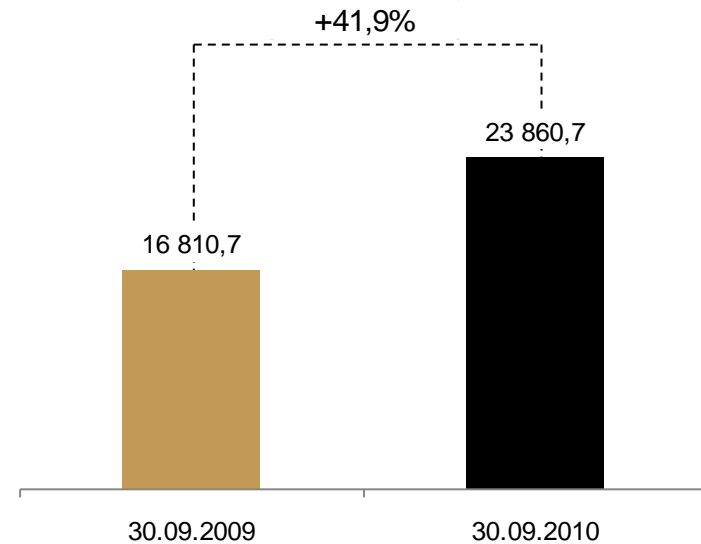
30,9 PLN bn	+20,7%	Loans balance
34,3 PLN bn	+21,6%	Deposits balance
3,2 PLN bn	+9,3%	Equity (attributable to equity holders of the parent company)
39,0 PLN bn	+17,8%	Balance sheet total

Q3'2010 / Q2'2010

261,4 PLN m	-1,1%	Net interest income
252,1 PLN m	+6,7%	Net fee and commission income
170,7 PLN m	+58,3%	Operating profit
178,8 PLN m	-4,3%	Overhead costs
233,8 PLN m	-27,5%	Result on provision for NIL and other accounts receivable
134,3 PLN m	+31,5%	Net profit (attributable to equity holders of the parent company)
31,4%	-0,4 p.p.	C / I
10,3%	+0,8 p.p.	CAR
17,2%	+2,4 p.p.	ROE



Sales (PLN m)

Loan portfolio (PLN m) ¹⁾

Retained position of the second leading player on the mortgage market - a 12,9% ²⁾ market share after the 8 months of 2010

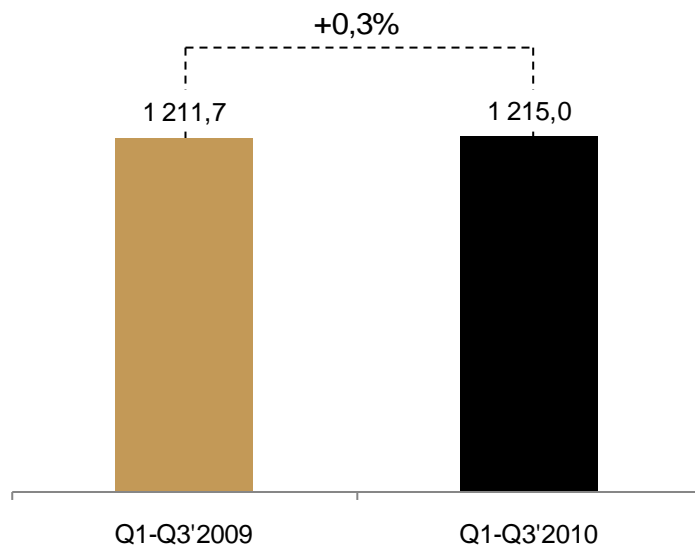
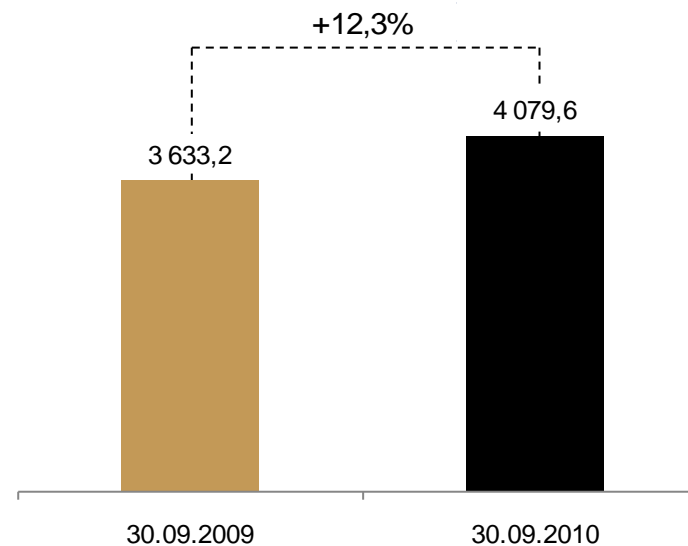
Balance growth more than four times higher than that of the entire market

1) Gross portfolio

2) According to a ranking by Rzeczpospolita, a daily, 21 October 2010



Sales (PLN m)

Loan portfolio (PLN m) ¹⁾

Percentage of loans for financing new vehicles went up to 27,9% as at the end of September against 22,0% at the end of 2009

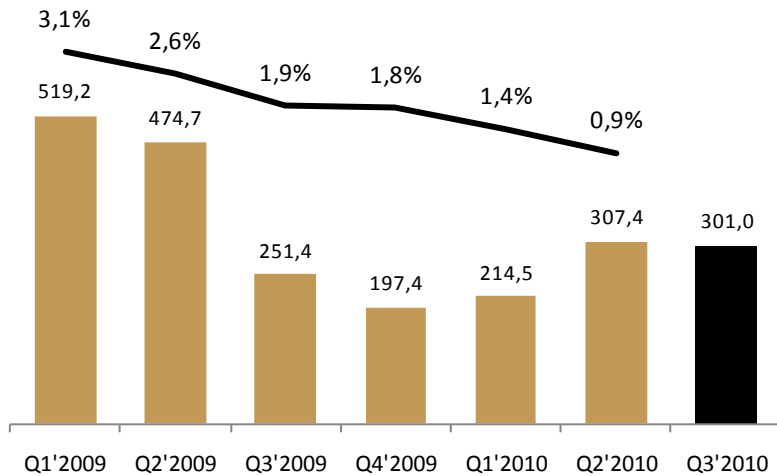
Growing sales in spite of a difficult car market:

- seasonal increased interest in leases owing to changes in VAT law (last months of a possibility of VAT deductibility for vehicles with lorry approval certificates)
- until the end of September, dealers and manufacturers sold 2,58% fewer cars compared with the previous year; also the used car imports were falling for the fourth month in a row (m/m of the previous year)

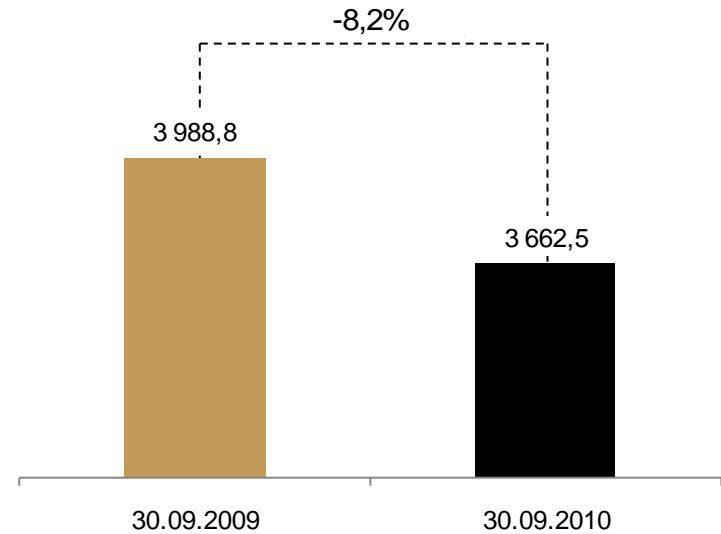
Strengthened leadership in the auto loan market

Sales (PLN m)

vs. interest for 30-day delay in payment of the first instalment



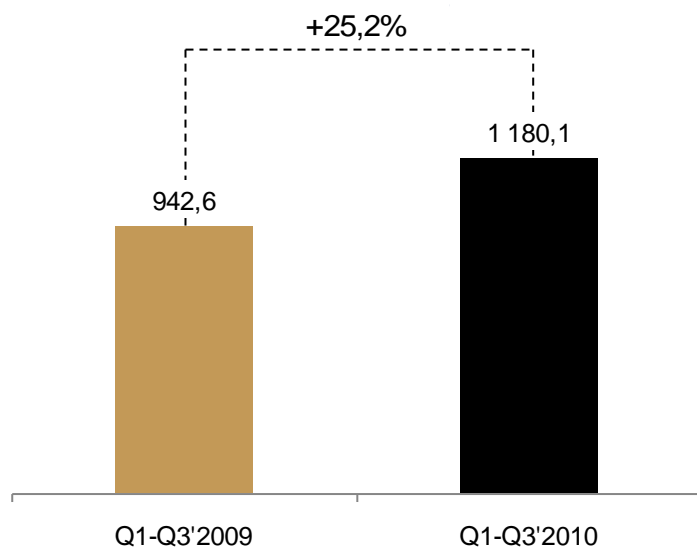
Loan portfolio (PLN m)¹⁾



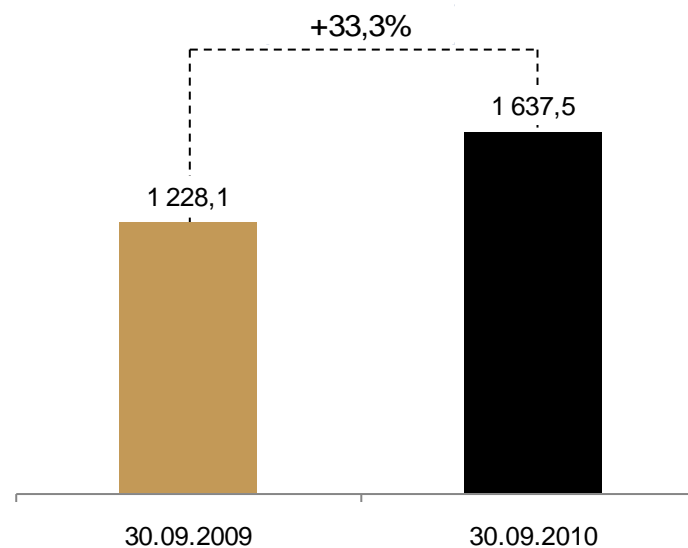
 Higher sales with the improving quality of the new portfolio

1) Gross portfolio


Sales (PLN m) ^{1,2)}



Loan portfolio (PLN m) ^{1,2)}



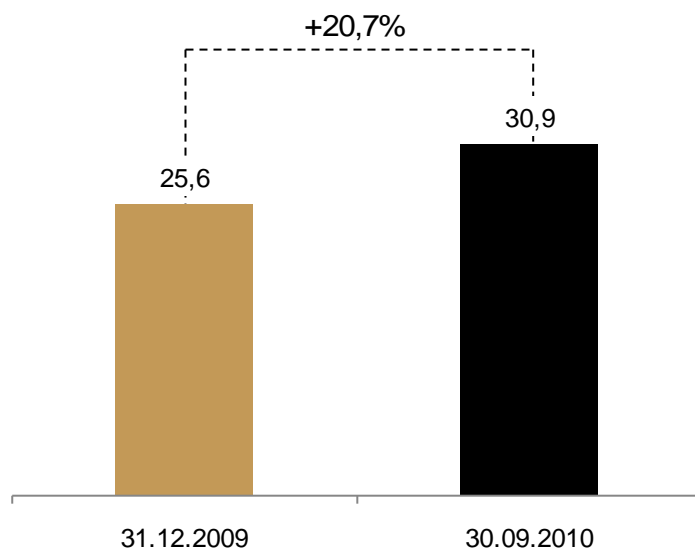
 Better lease sales by 80,7% y/y

 Very strong sales results under the “JST Contract”, a loan for businesses co-operating with the local government institutions

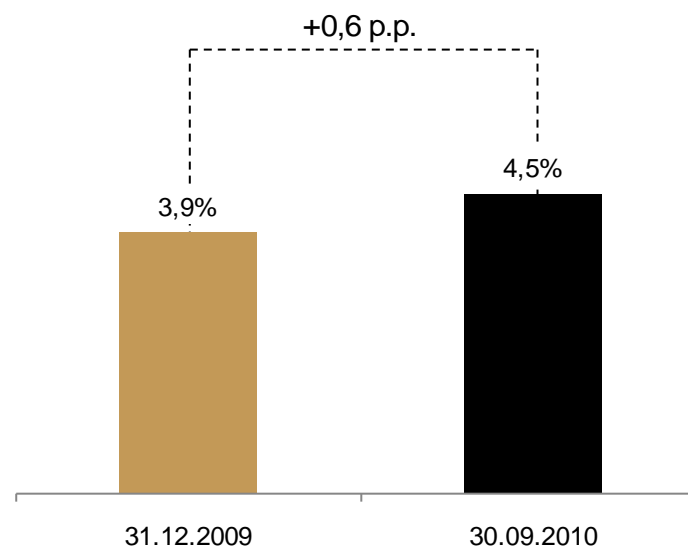
1) Gross portfolio


2) Including leases


Balance (PLN bn)



Market share (%)



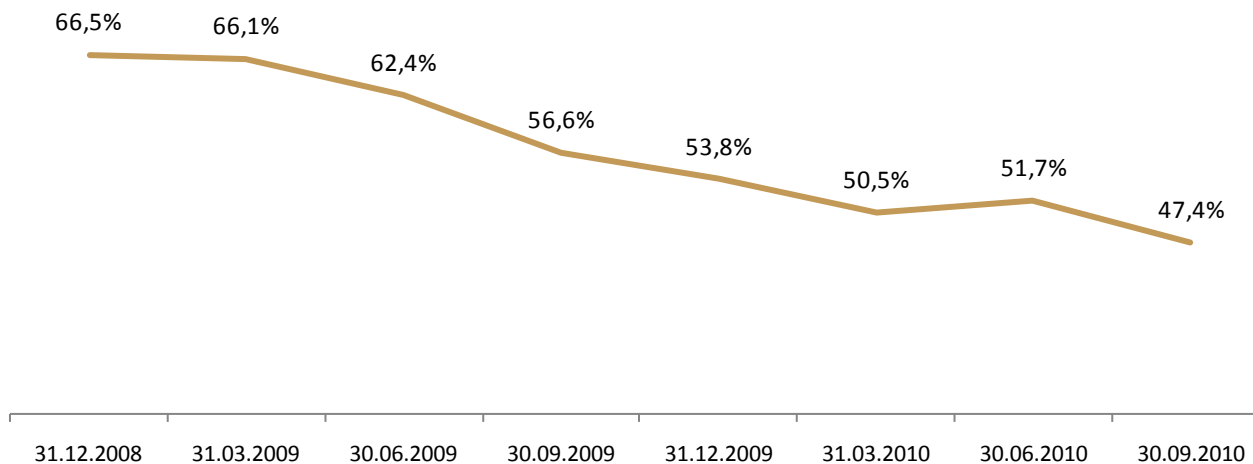
 Growth in the balance of loans above the market rate (market's growth of 10,0% ²⁾ since the year start)

 Expanded the share in this market, to 4,5%


1) The market share has been calculated based on the National Bank of Poland's data (market = banks operating in Poland + Poland-residing branches of credit institutions and branches of foreign banks + credit unions)

2) According to the data published by the National Bank of Poland

Share of foreign currency loans in the total loan portfolio (%)

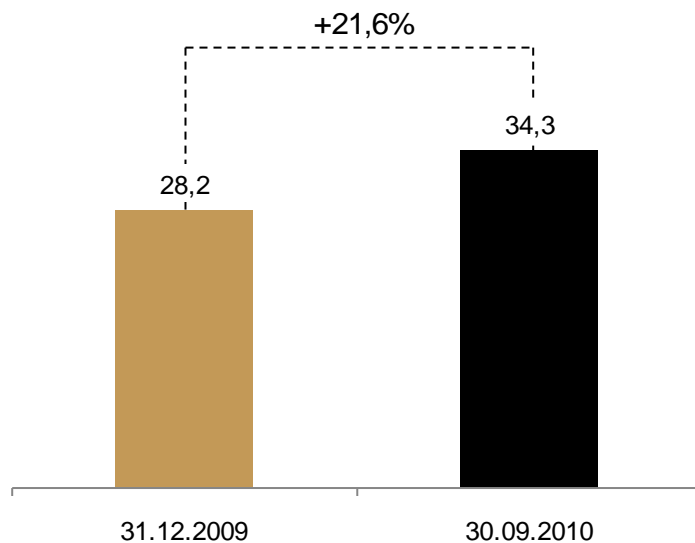


 The share of foreign currency loans in the total portfolio below 50%

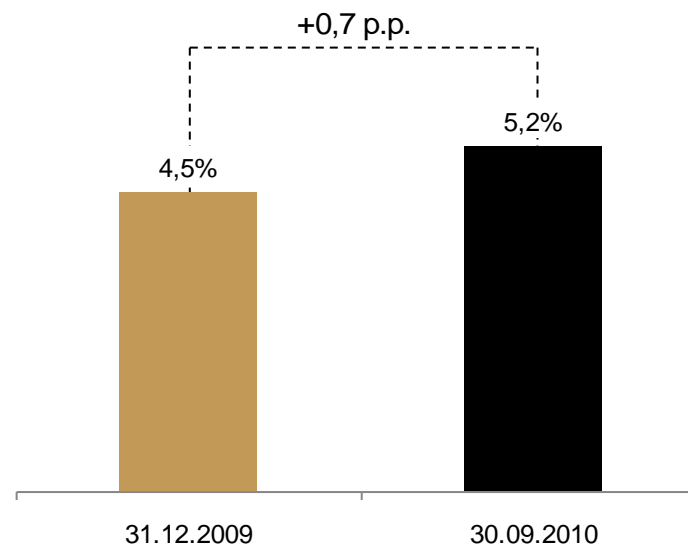
 Continued focus on the sales of loans in the Polish currency (PLN)


DEPOSITS: BALANCE AND MARKET SHARE


Balance (PLN bn)



Market share (%)

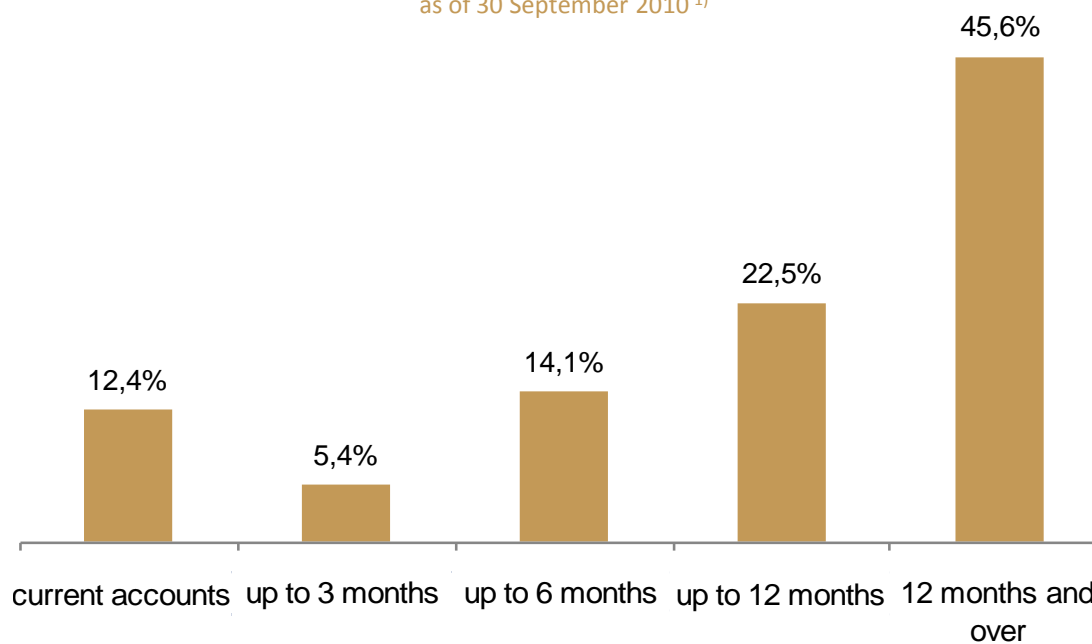


 Rising share in the deposit market, to a level of 5,2% as at the end of Q3 2010

 As at 30 September 2010, deposits accounted for 88,1% of the financing sources for the Bank's activity

1) The market share has been calculated based on the National Bank of Poland's data (market = banks operating in Poland + Poland-residing branches of credit institutions and branches of foreign banks + credit unions)

Deposit structure by term

as of 30 September 2010 ¹⁾

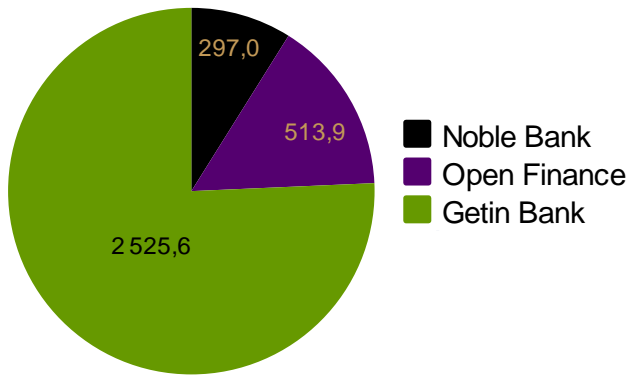
🌳 68,1% of the deposit base with original maturities of six months or more, which represents an increase in the share of financing structure, from 51,5% as at the end of 2009

🌳 Deposits rolled over in 2010 at a lower average interest rate compared with 2009

1) Deposit structure according to management reporting

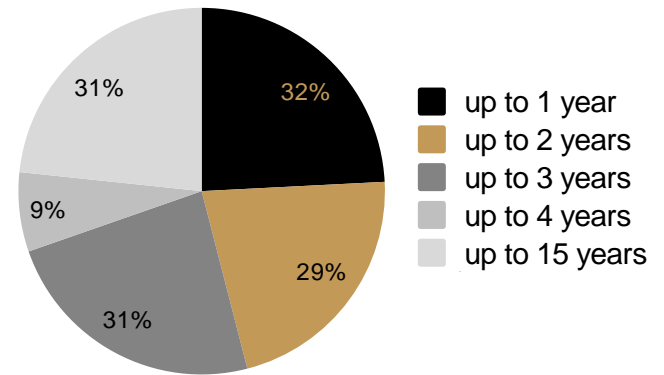


Sales (PLN m)



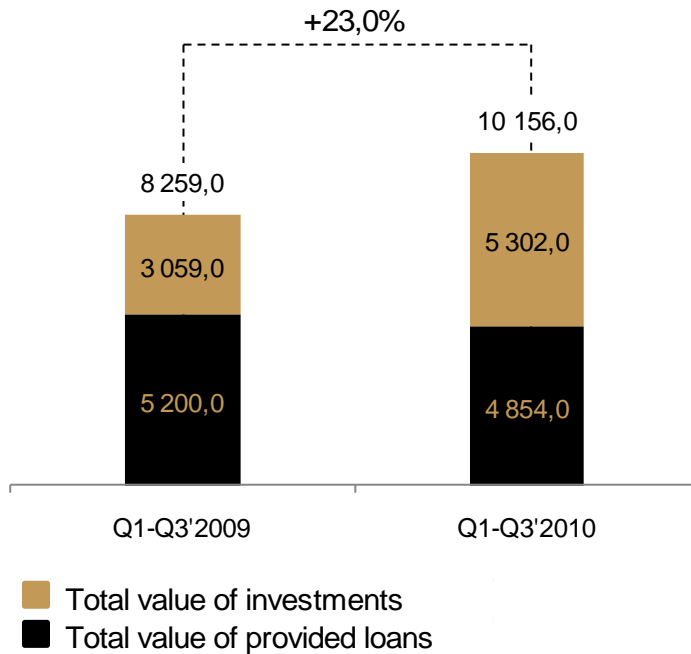
Total: 3 336,5 mln PLN

Term structure (%) ¹⁾

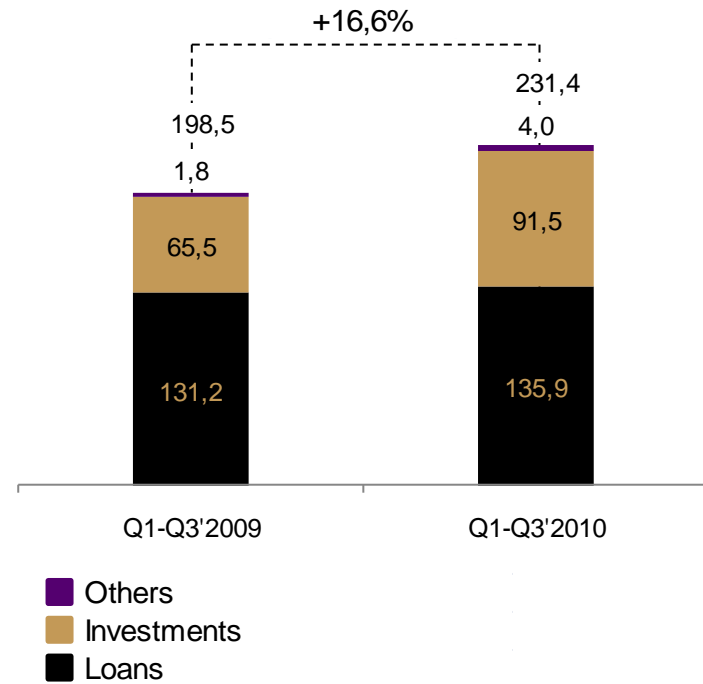


1) Regular saving plan products by target investment value

Sales (PLN m)

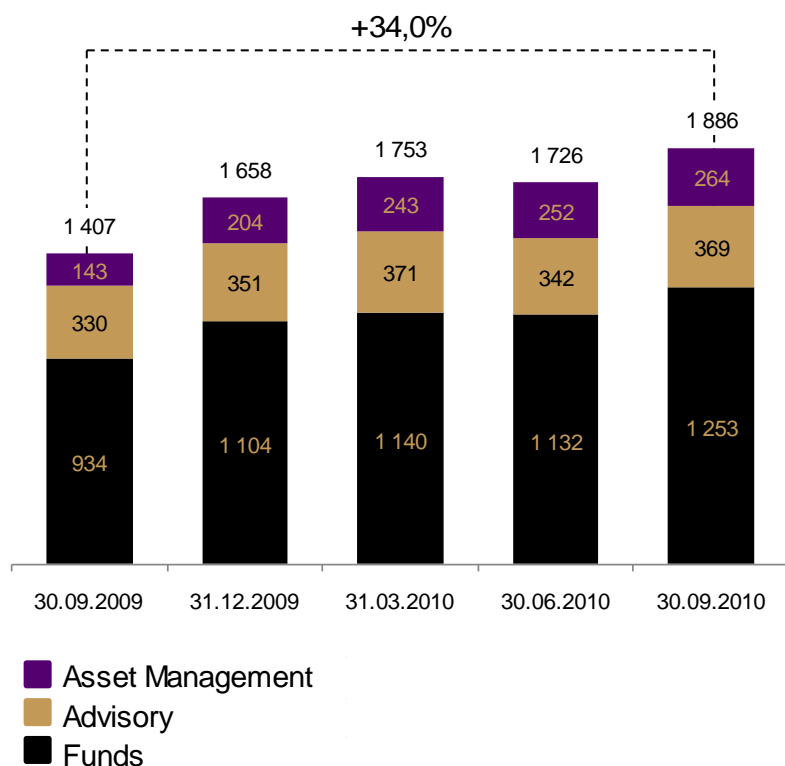


Commission income (PLN m)



 Sales rose to more than PLN 10bn (a 23,0% y/y increase)

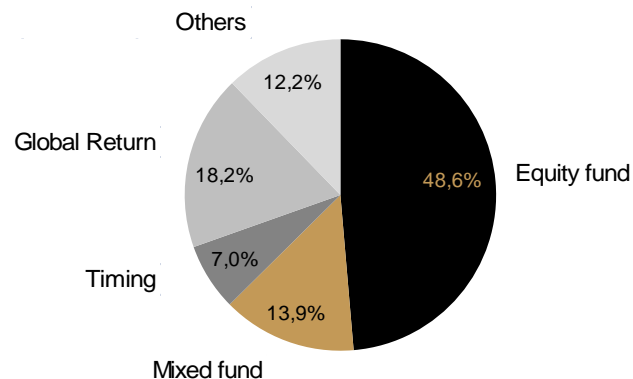
Noble Funds's assets broken down by operating segment (PLN m)



Place on the market of equity funds

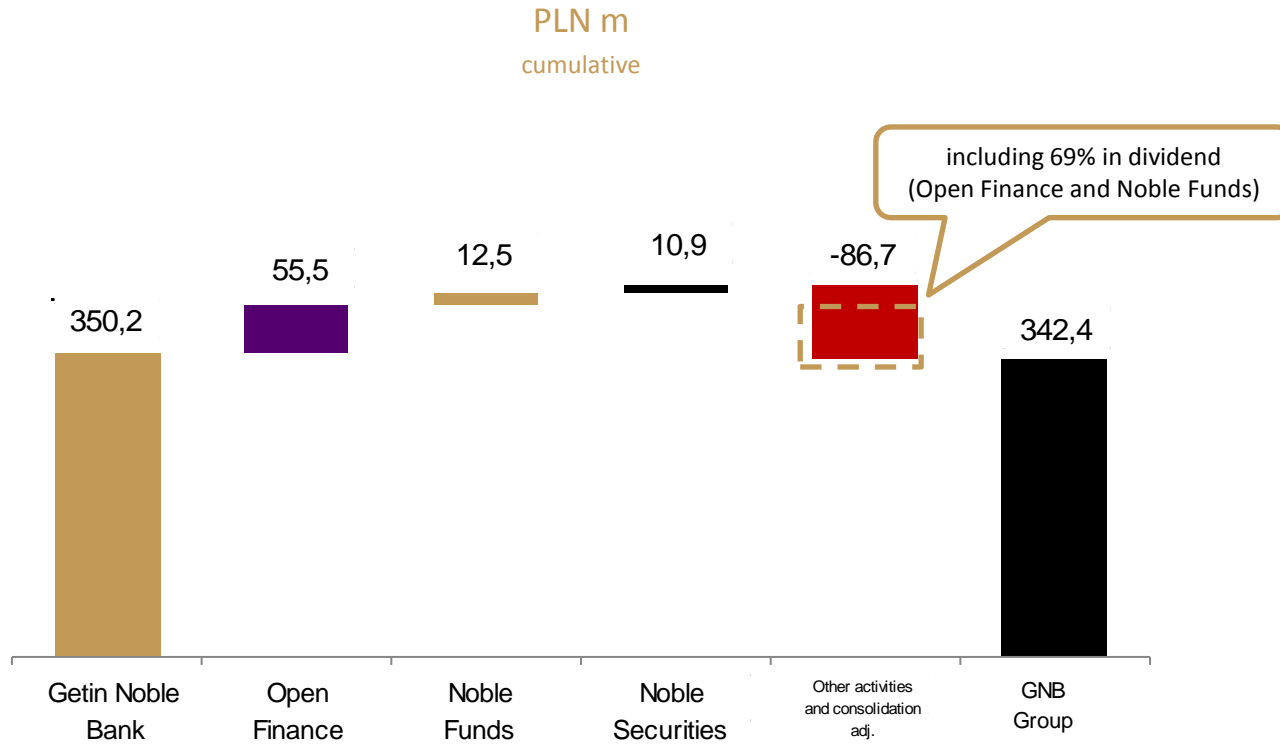
return rate in period of 24 months (till 01-10-2010) ¹⁾	
1 QUERCUS Agresywny (Parasolowy SFIO)	58,6%
2 Aviva Investors Nowych Spółek (Aviva Investors FIO)	57,8%
3 Idea Akcji (Idea FIO)	34,1%
4 SKOK Akcji (SKOK PARASOL FIO)	33,8%
5 Noble Akcji (Noble Funds FIO)	24,7%
6 UniKorona Akcje (UniFundusze FIO)	23,3%
7 FORTIS Akcji (Fortis FIO)	23,0%
8 Lukas Akcyjny (Lukas FIO)	21,7%
9 Aviva Investors Polskich Akcji (Aviva Investors FIO)	20,1%
10 Allianz Akcji Plus (Allianz FIO)	19,6%
.....

Structure of investment fund assets (%)

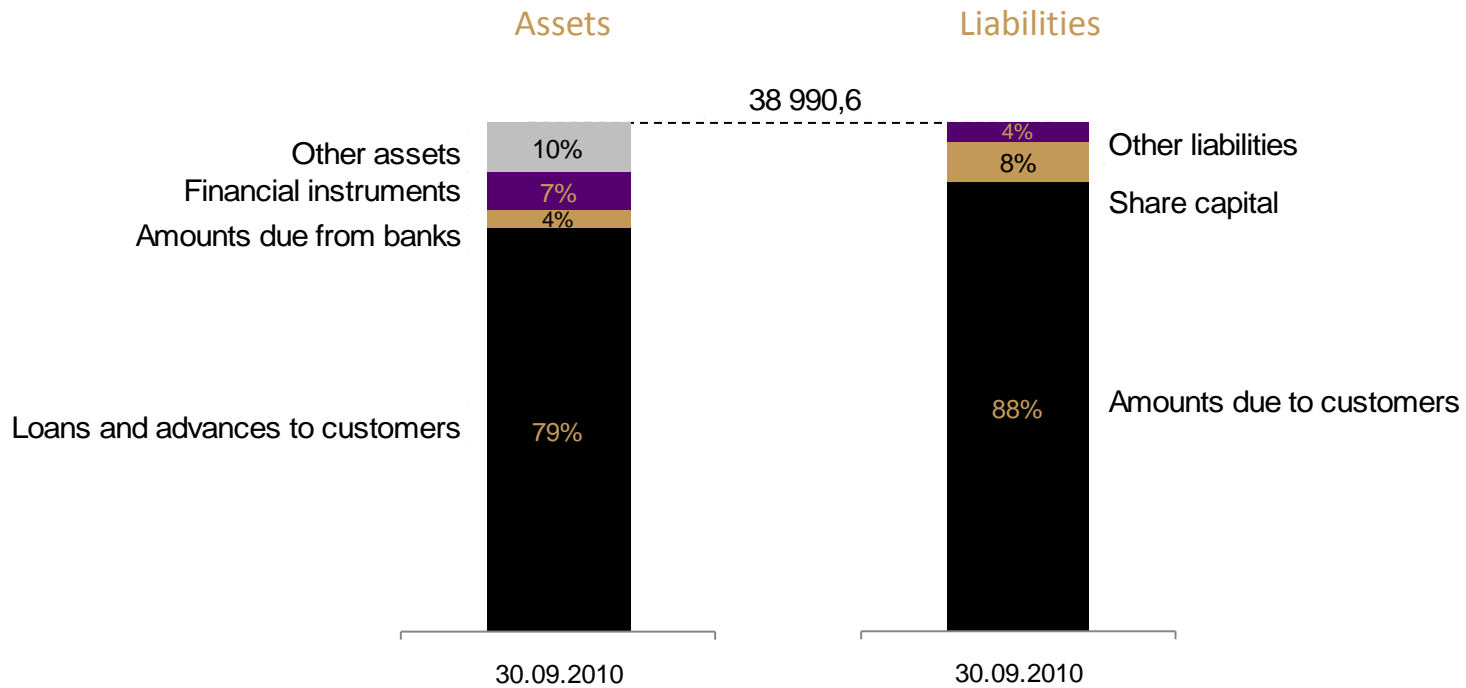


1) First ten places in a ranking of universal equity funds, prepared based on the data from Analityz Online website

COMPANIES' CONTRIBUTION TO GETIN NOBLE BANK GROUP'S PROFIT





Balance sheet structure (PLN m)



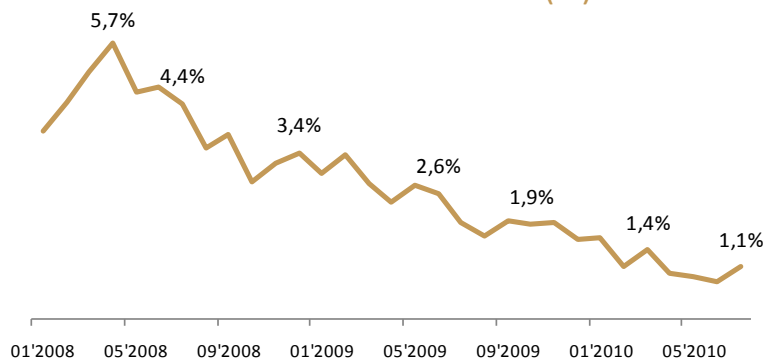
NPL ratio & provision coverage ratio (%)

NLP (%)	30.09.2010	31.12.2009	change
corporation credits	10,9%	12,5%	-2 p.p.
car credits	15,7%	10,2%	+5 p.p.
mortgages	4,4%	2,3%	+2 p.p.
consumer credits	41,2%	34,0%	+7 p.p.
Total	10,2%	7,7%	+2 p.p.
	0	0	0
Provision coverage ratio	70,6%	76,2%	-6 p.p.

 Further improvement in the level of risk associated with auto loans

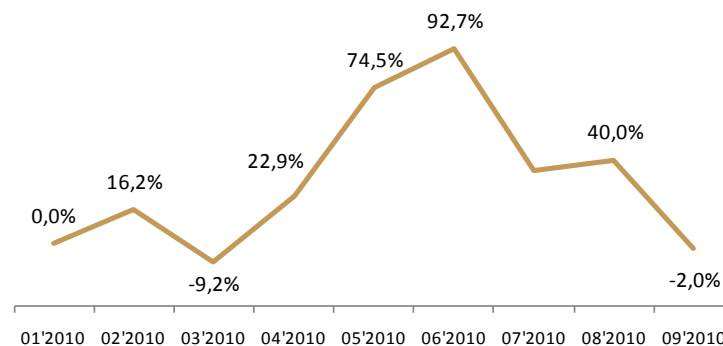
 Considerable improvement in the risk associated with cash loans

Percentage of 30-day delays in payment of the first instalment (%)



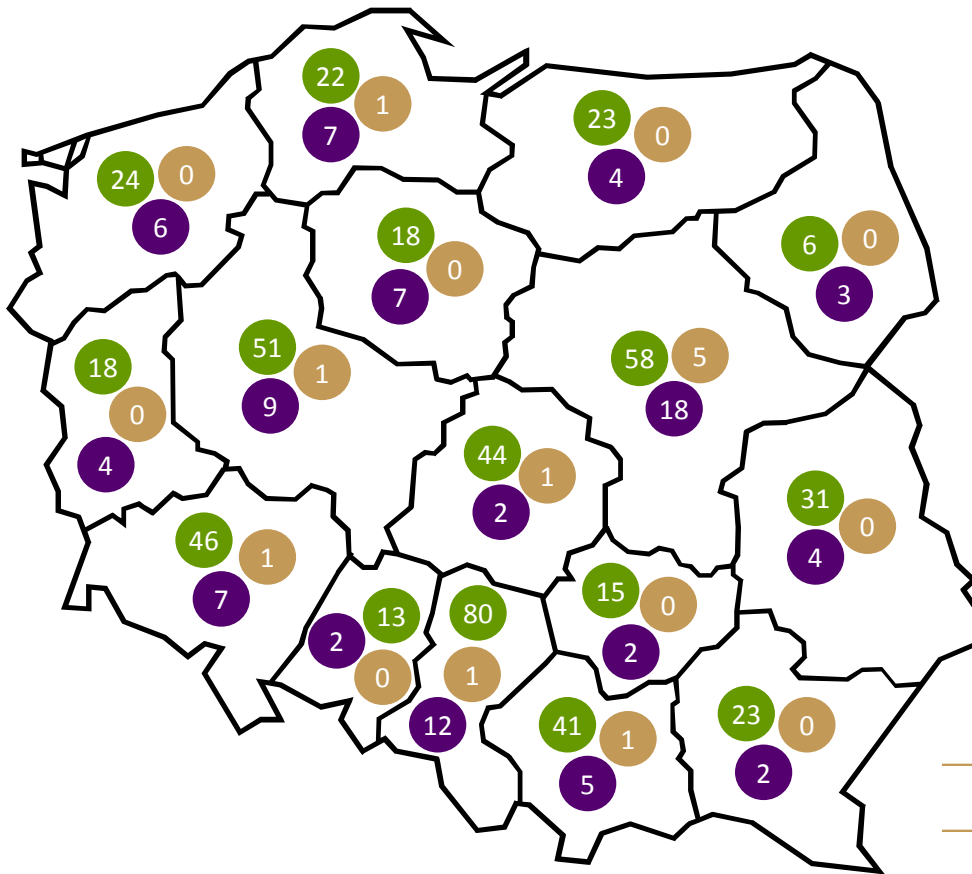
Auto loans risk

percentage charges values change according to January 2010





Getin Noble Bank enters the top five banks on the market



	number of branches ¹⁾	as at
1 PKO BP	1 222	2010-08-31
2 Pekao	1 031	2010-07-02
3 BZ WBK	615	2010-10-11
4 Euro Bank	524	2010-08-16
5 Getin Noble Bank	524	2010-09-30
6 BPH	504	2010-09-29
7 Millenium	460	2010-10-12
8 ING	442	2010-09-13
9 Lukas	441	2010-08-18
10 Kredyt Bank	383	2010-08-31
...

Getin Bank	513
Noble Bank	11
Open Finance + Open Direct	94

1) According to the data from Rzeczpospolita, 28 October 2010



	PLN m	30.09.2010	31.12.2009	30.09.2010 / 31.12.2009
Equity (attributable to equity holders of the parent company)		3 158,1	2 889,5	+9,3%
Balance sheet total		38 990,6	33 126,6	+17,8%
Loans balance		30 856,2	25 602,7	+20,7%
Deposits balance		34 331,4	28 236,5	+21,6%
	PLN m	Q1-Q3'2010	Q1-Q3'2009	Q1-Q3'2010 / Q1-Q3'2009
Income		1 690,4	1 292,4	+30,8%
Overhead costs		-530,8	-468,7	+13,2%
Net profit (attributable to equity holders of the parent company)		342,4	245,2	+39,6%
C / I - consolidated (%)		31,4%	36,3%	-4,9 p.p.
C / I - separate (%)		26,7%	31,3%	-4,6 p.p.
ROE		17,2%		
NIM		2,9%		
CAR		10,3%		



This presentation has been prepared for information purposes only to be used by Noble Bank S.A.'s customers and shareholders and by market analysts and may not be considered as an offer or recommendation to execute any transactions. The information contained in this presentation is based on publicly available and reliable sources. However, Noble Bank S.A. cannot guarantee that this information is complete. Noble Bank S.A. takes no responsibility for the consequences of any decisions based on any information contained in this presentation. The information contained in this presentation has never been subject to independent verification and may at any time be subject to change or modification. The publication by Noble Bank S.A. of the figures contained in this presentation is not a breach of the regulations applicable to companies whose shares are traded on a regulated market. The information provided in this presentation has already been disclosed in current or periodic reports published by Noble Bank S.A. or constitutes an addition to those reports, and its publication does not require the bank to fulfil the obligation to provide information as imposed on the bank as a public company. The content of this presentation may not, in any case, be interpreted as an express or implied statement or assurance made by the company or its representatives. In addition, neither the company nor its representatives may be held liable, in any way (as a result of negligence or for any other reason) for any loss or damage that might arise in connection with use of this presentation or any content of this presentation or that might arise in any other way in connection with the information contained in this presentation. In the event of a change to the company's strategy or intentions or in the event of unexpected facts or circumstances affecting the company's strategy or intentions, the company is not responsible for informing the public of any possible modifications or changes to any information, data or statements provided in this presentation. This presentation contains information relating to the Polish banking sector, including information on the company's market share. Except for information described as based on other sources only, the market-related information referred to above has been prepared based on data from the sources of the third persons named in this document and includes estimates, assessments, corrections and opinions based on the company's experience and knowledge of the sector in which the company operates. Since the market-related information referred to above has in part been prepared based on estimates, assessments, corrections and opinions and has not been verified by independent third persons (except for information described as based on the sources of third persons), the information is, to some degree, subjective in nature. It is presumed that the above estimates, assessments, corrections and opinions are based on reasonable grounds and that the market-related information properly reflects the situation in the banking sector and in the markets in which the company operates. However, it is not certain that the estimates, assessments, corrections and opinions are the most appropriate basis for conclusions relating to market information or that market information prepared by other sources will not be considerably different from the market-related information contained in this presentation. Please note that the only reliable source of information on the situation of Noble Bank S.A., forecasts, events, financial results and indicators is the current and periodic reports published by Noble Bank S.A. as part of its obligation to provide information.